

## Lab - Exploring FTP

### Objectives

**Part 1: Use FTP from a Command Prompt**

**Part 2: Download an FTP File Using WS\_FTP LE**

**Part 3: Use FTP in a Browser**

### Background / Scenario

The File Transfer Protocol (FTP) is part of the TCP/IP suite. FTP is used to transfer files from one network device to another network device. Windows includes an FTP client application that you can execute from the command prompt. There are also free graphical user interface (GUI) versions of FTP that you can download. The GUI versions are easier to use than typing from a command prompt. FTP is frequently used for the transfer of files that may be too large for attachment with an email.

When using FTP, one computer is normally the server and the other computer is the client. When accessing the server from the client, you need to provide a username and password. Some FTP servers have a user named **anonymous**. You can access these types of sites by simply typing “anonymous” for the user, without a password. Usually, the site administrator has files that can be copied but does not allow files to be posted with the anonymous user.

In this lab, you will learn how to use anonymous FTP from the Windows command-line C:\> prompt. You will also use the GUI-based FTP program, WS\_FTP LE. Finally, you will use an anonymous FTP in a browser.

### Required Resources

1 PC (Windows 7, Vista, or XP with access to the command prompt and Internet access and WS\_FTP LE installed)

### Part 1: Use FTP from a Command Prompt

- Click the **Windows Start** button, type **cmd** in the search field, and press Enter to open a command window.
- At the C:\> prompt type **ftp ftp.cdc.gov**. At the prompt that says **User (ftp.cdc.gov:(none)):** type **anonymous**. For the password, do not type anything. Press Enter to be logged in as an anonymous user.

```
Microsoft Windows [Version 6.1.7600]
Copyright (c) 2009 Microsoft Corporation. All rights reserved.

C:\Users\User1>ftp ftp.cdc.gov
Connected to ftp.cdc.gov.
220 Microsoft FTP Service
User (ftp.cdc.gov:(none)): anonymous
331 Anonymous access allowed, send identity (e-mail name) as password.
Password:
230 Anonymous user logged in.
ftp>
```

Notice that the C:\> prompt has been replaced with the ftp> prompt. Type **ls** to list the files and directories. At the time that this lab was authored, there was a Readme file.

```
ftp> ls
200 PORT command successful.
150 Opening ASCII mode data connection for file list.
aspnet_client
pub
Readme
```

## Lab - Exploring FTP

- c. At the prompt, type **get Readme**. This downloads the file to your local computer from the anonymous FTP server that the Center for Disease Control has setup. The file will be copied into the directory shown in the C:\> prompt (C:\Users\User1 in this case).

```
ftp> get Readme
200 PORT command successful.
150 Opening ASCII mode data connection for Readme(1428 bytes).
226 Transfer complete.
ftp: 1428 bytes received in 0.00Seconds 1428000.00Kbytes/sec.
ftp>
```

- d. Type **quit** to leave FTP and return to the C:\> prompt. Type **more Readme** to see the contents of the document.

```
ftp> quit
221
C:\Users\User1>more Readme

Welcome to the Centers for Disease Control and Prevention and Agency for
Toxic Substances and Disease Registry FTP server. Information maintained on
this server is in the public domain and is available at anytime for your use.
CDC/ATSDR requests that you provide a valid e-mail address when responding to
the FTP server's password prompt.

FTP POLICY

CDC/ATSDR's file structure is designed to make information easily accessible
for faster response. All FTP directories and sub-directories should contain
the following files:

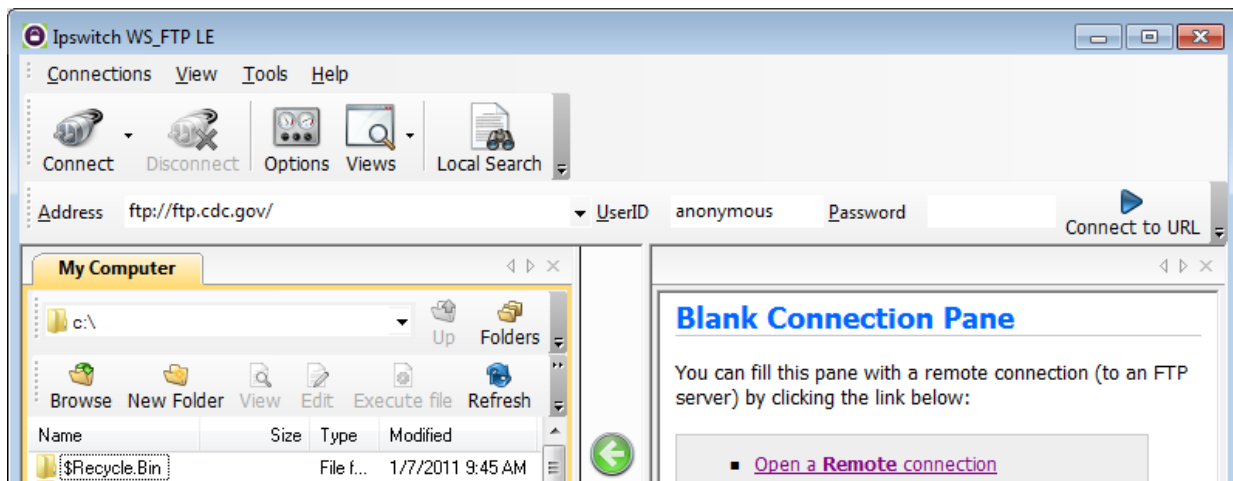
      README.TXT          Contains general information and Disclaimer text.
                          (ASCII)
```

- e. What is a drawback of using the FTP from the command line?

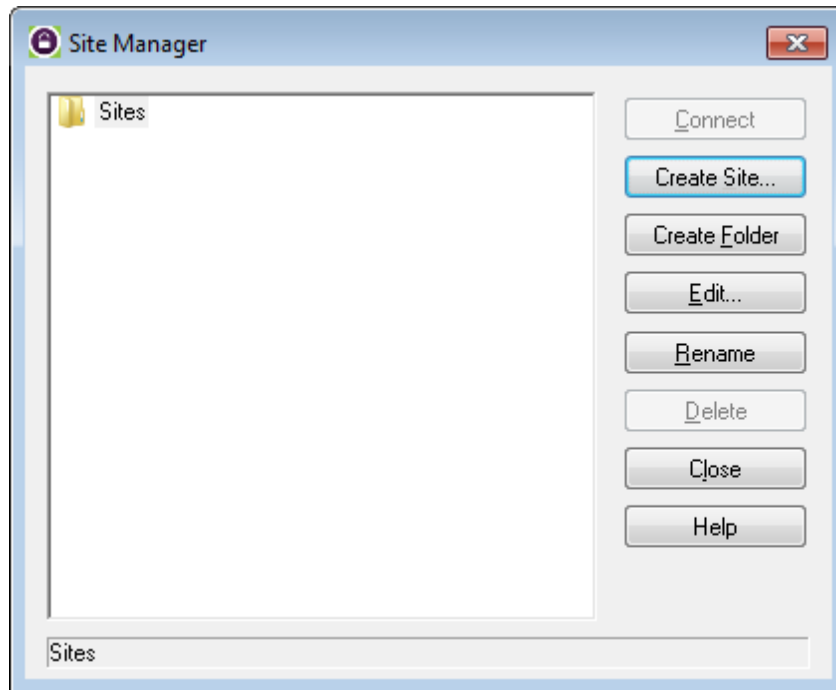
## Part 2: Download an FTP File Using WS\_FTP LE

In Part 2, you will download a file using WS\_FTP LE (a free FTP transfer tool).

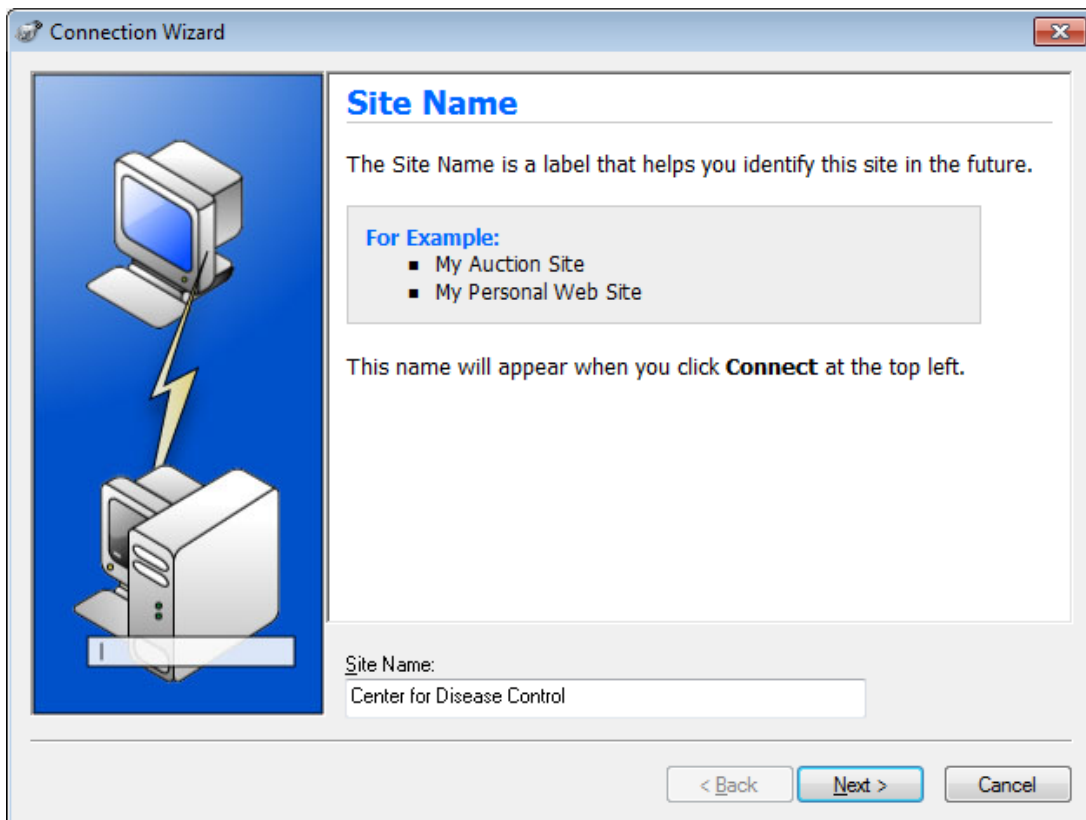
- a. Start **WS\_FTP LE**. If the Ipswitch WS\_FTP LE window displays, click **Next** to continue and skip to step c. Otherwise, click the **Open a Remote Connection** link.



b. Click **Create Site...**

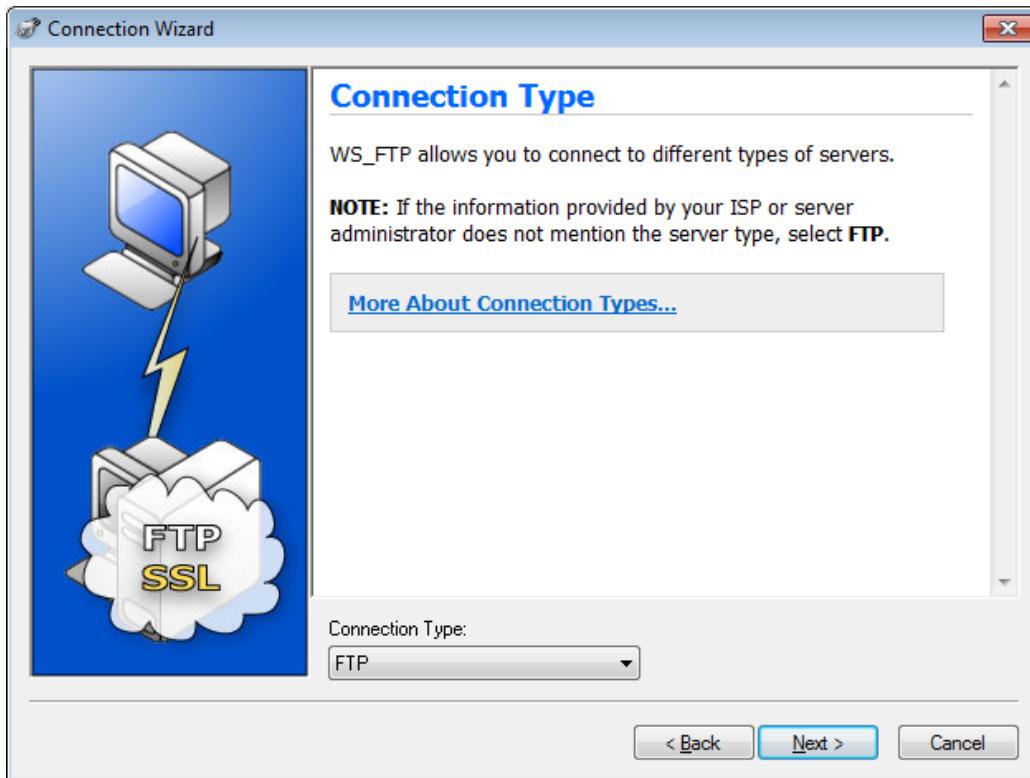


c. In the **Site Name** field, type **Center for Disease Control** and click **Next** to continue.

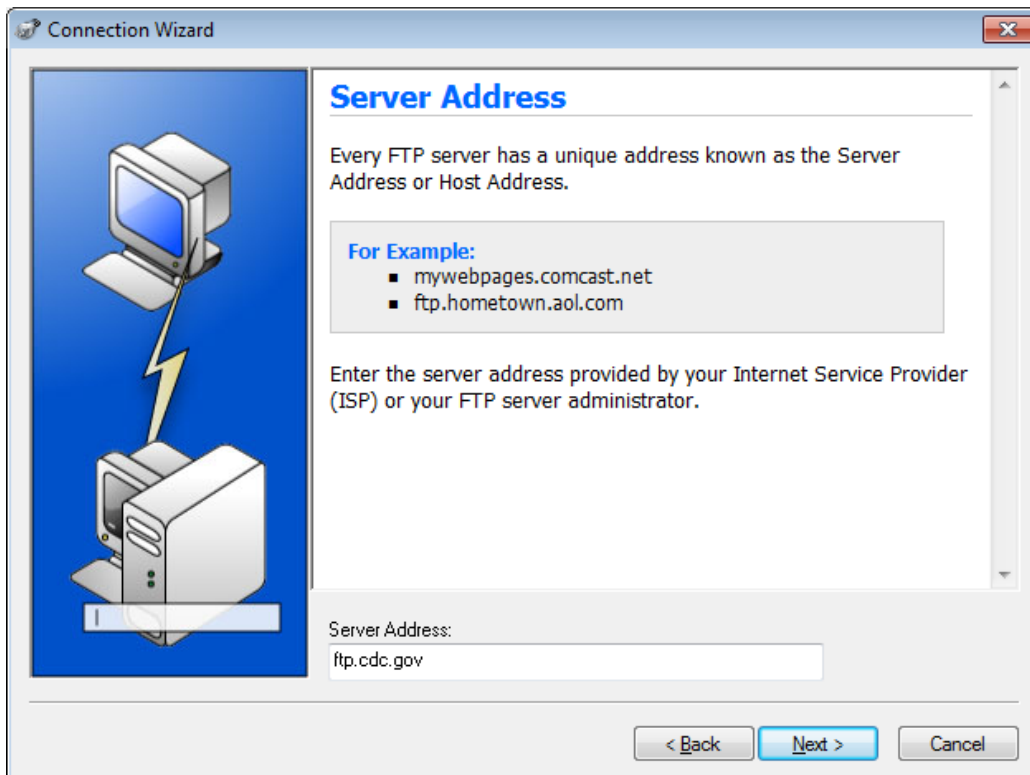


## Lab - Exploring FTP

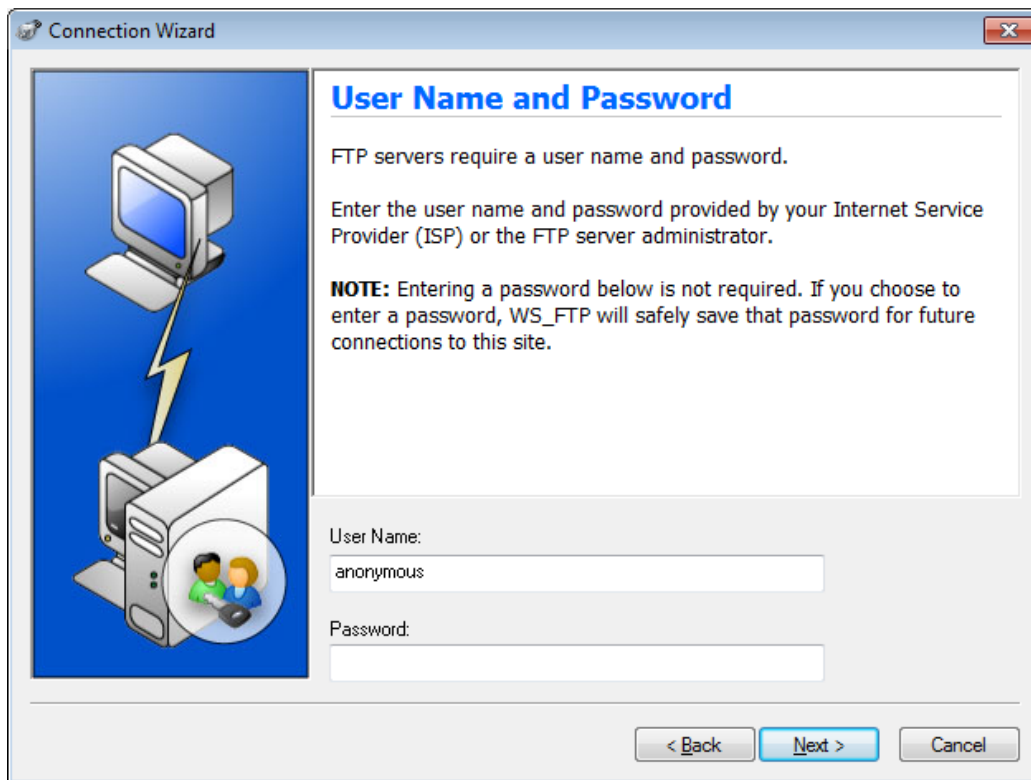
- d. Click the **Connection Type** drop-down list, select **FTP** (the default connection type), and click **Next**.



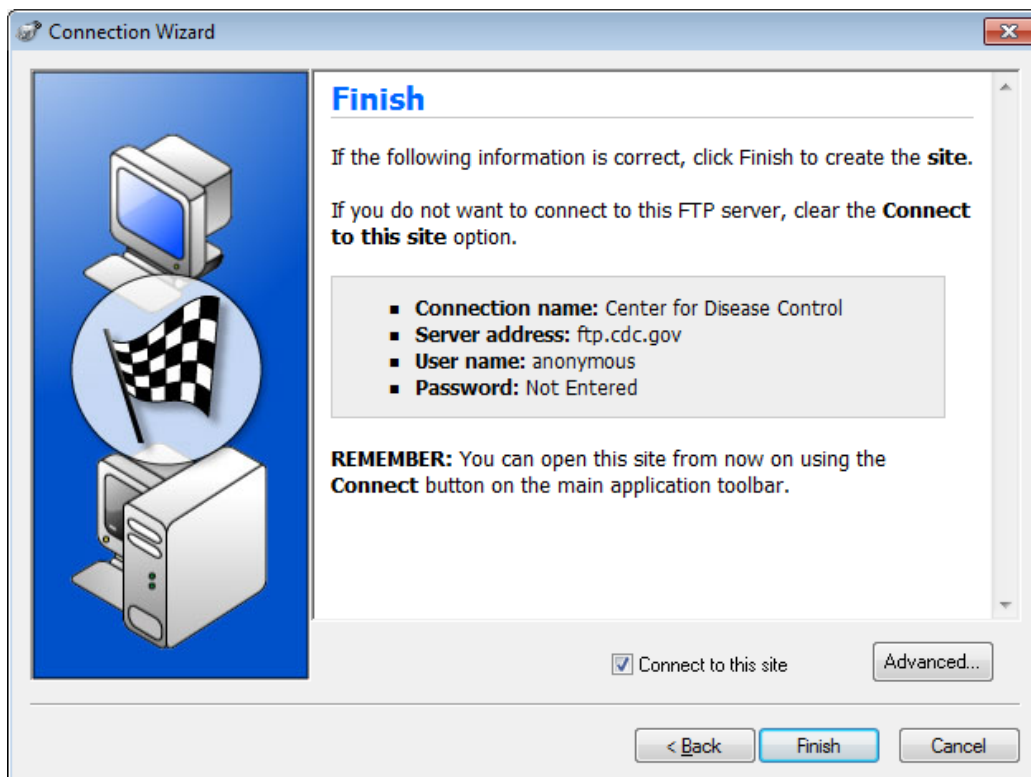
- e. In the **Server Address** field, type [ftp.cdc.gov](ftp://ftp.cdc.gov), and click **Next**.



- f. In the **User Name** field, type **anonymous**, and leave the password field blank. Click **Next**.

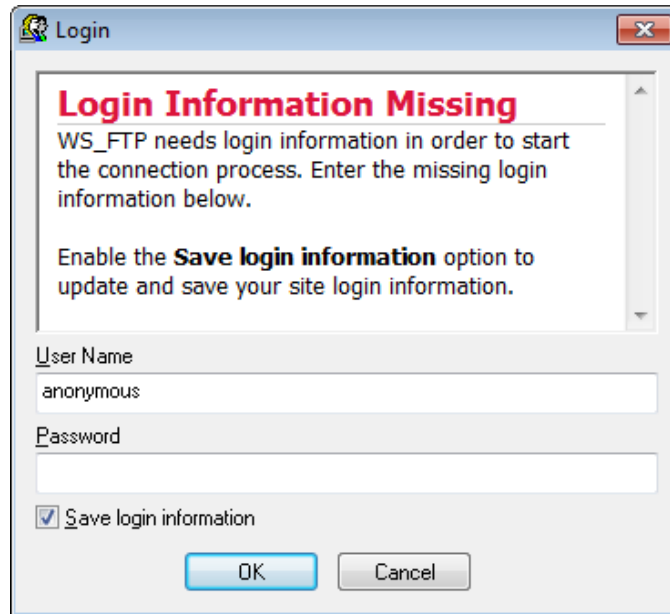


- g. Click **Finish**.

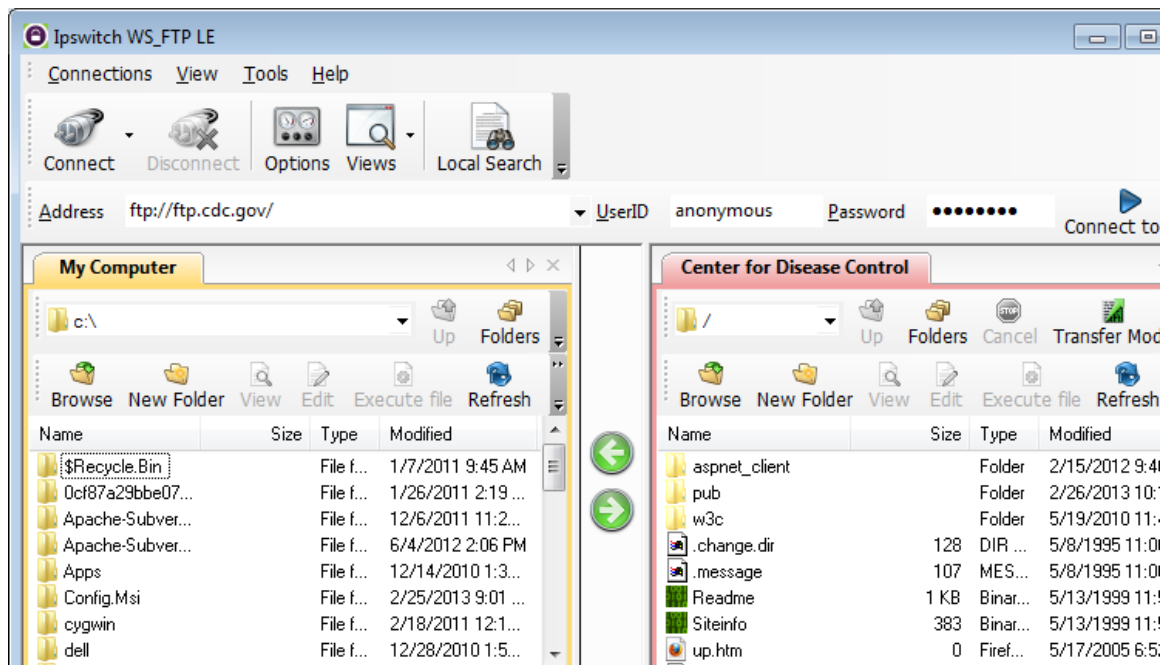


## Lab - Exploring FTP

- h. When the Login Information Missing dialog box displays, click **OK**. Do not type a password in the **Password** field.

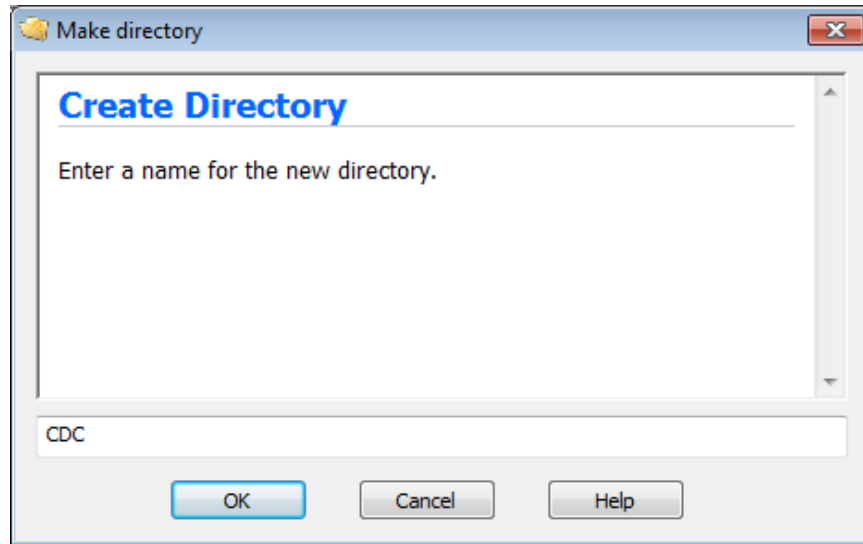


- i. You are now anonymously connected to the Center for Disease Control FTP site.

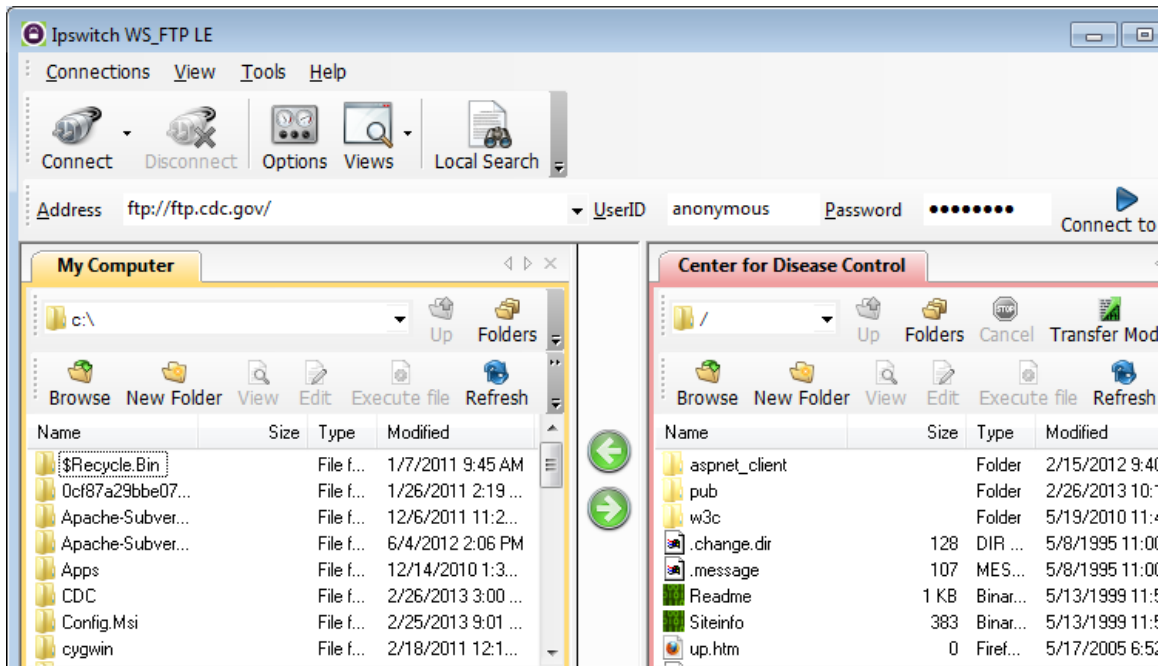


- j. On the WS\_FTP LE toolbar menu under My Computer, click **New Folder** to create a folder on your local **C:\** drive.
- k. In the Make Directory dialog box name the folder as **CDC** and click **OK**.

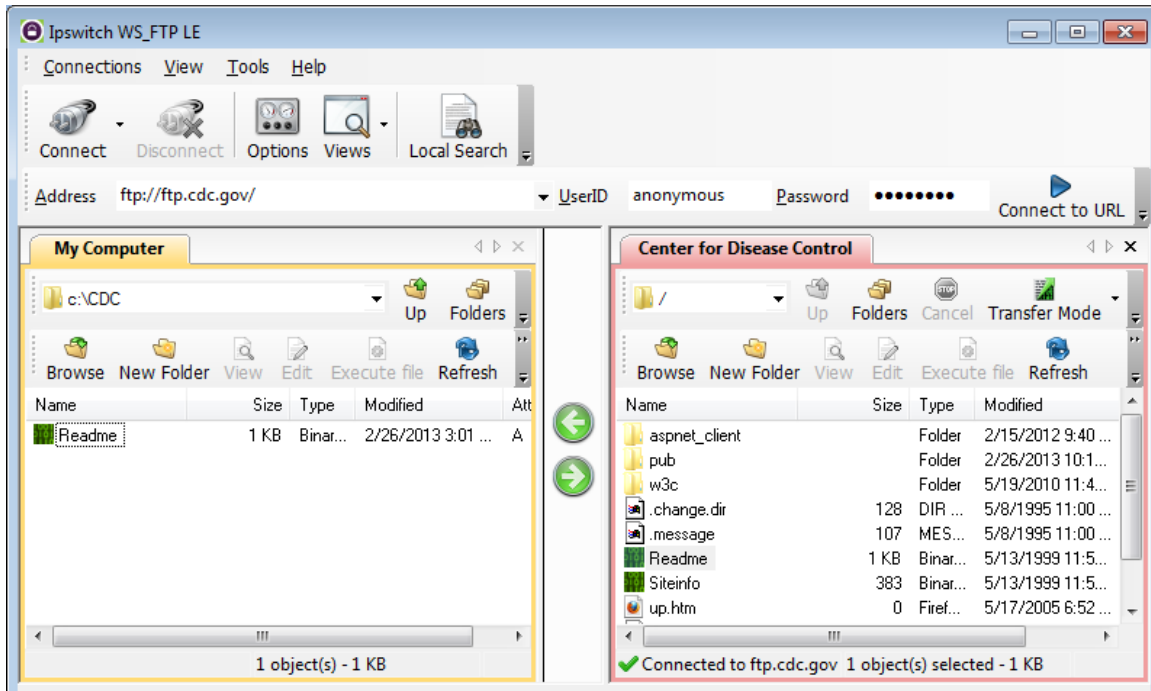
**Note:** If the folder already exists, you can use the same folder or create another folder with a different name. If using the same CDC folder, you can replace the existing Readme file with the downloaded Readme file.



- l. After the directory is created, in the **My Computer** tab page, double-click the directory to open it.



- m. Drag the file **Readme** from the right side of the application (the remote CDC FTP server) into the CDC folder on to the local **C:\** drive.



- n. Double-click the **Readme** file in the **C:\CDC** folder on your local **C:\** drive. If prompted for an application to open the document, choose any word processing software. You should see a message that looks something like this:

```
Welcome to the Centers for Disease Control and Prevention and
Agency for Toxic Substances and Disease Registry FTP server.
Information maintained on this server is in the public domain
and is available at anytime for your use.
```

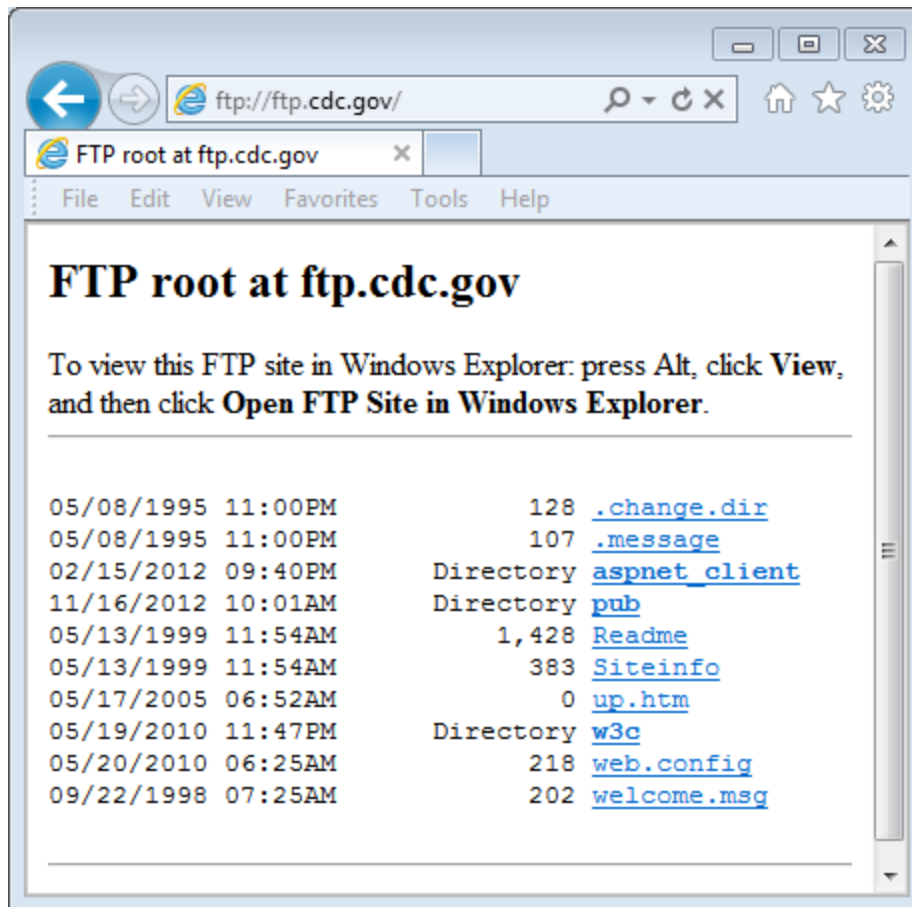
- o. Which was easier, using FTP from the **cmd** prompt, or using WS\_FTP LE?
- p. Click **Disconnect** to disconnect from the [ftp.cdc.gov](http://ftp.cdc.gov) site when finished.
- q. The remote site will be removed from the saved list of FTP sites. In the Ipswitch WS\_FTP LE window, click the **Open a Remote Connection** link. Select the **Center for Disease Control** site, and click **Delete** to remove the FTP site. Click **Yes** to confirm the deletion. Click **Close** to exit the Site Manager.
- r. Remove the **C:\CDC** folder.

### Part 3: Use FTP in a Browser

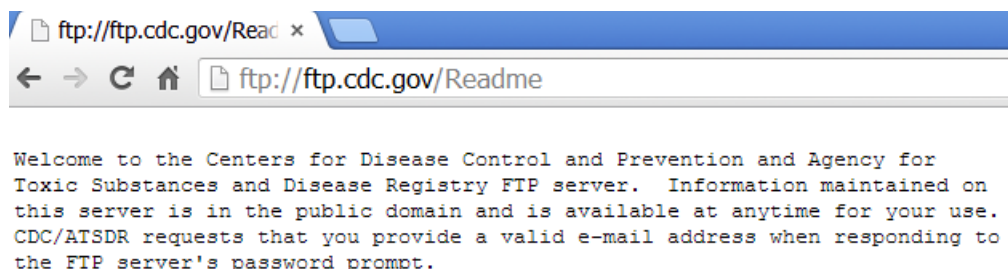
It is possible to use a browser as an anonymous FTP client.

- a. In a browser, type <ftp://ftp.cdc.gov/>.





- b. Click the **Readme** file.



## Reflection

1. Which FTP method was easiest to use?
2. Was there any advantage to using FTP from the command prompt or using WS\_FTP LE?