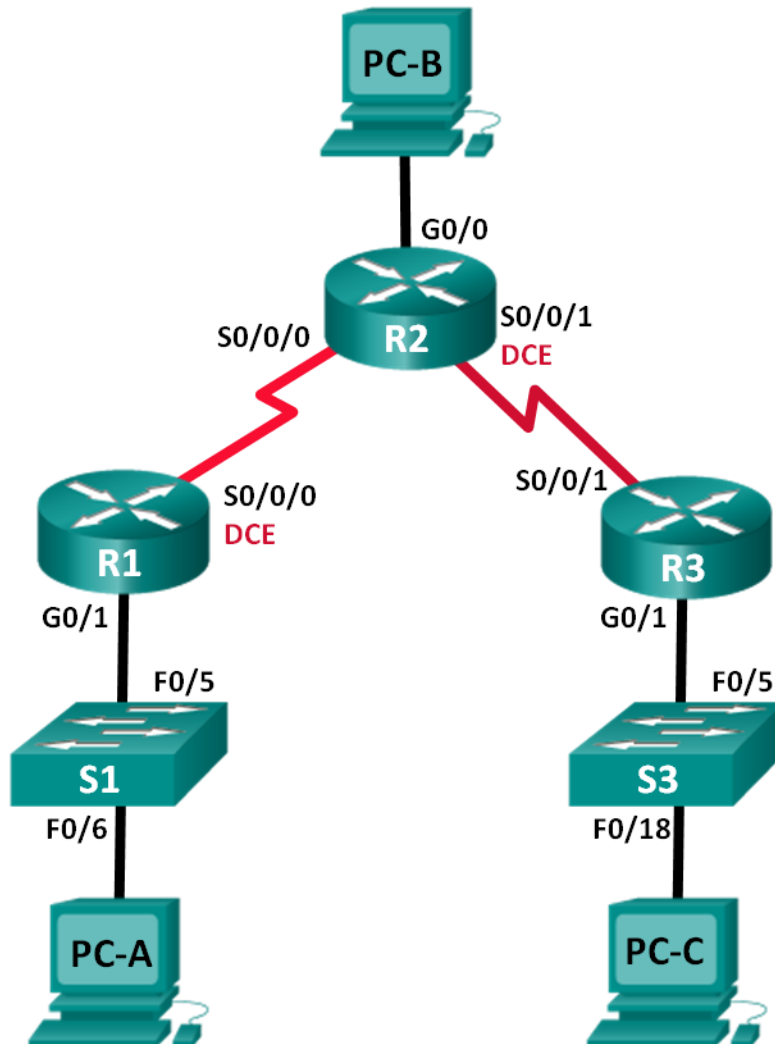


Lab – Configuring Basic RIPv2 and RIPvng

Topology



Addressing Table

Device	Interface	IP Address	Subnet Mask	Default Gateway
R1	G0/1	172.30.10.1	255.255.255.0	N/A
	S0/0/0 (DCE)	10.1.1.1	255.255.255.252	N/A
R2	G0/0	209.165.201.1	255.255.255.0	N/A
	S0/0/0	10.1.1.2	255.255.255.252	N/A
	S0/0/1 (DCE)	10.2.2.2	255.255.255.252	N/A
R3	G0/1	172.30.30.1	255.255.255.0	N/A
	S0/0/1	10.2.2.1	255.255.255.252	N/A
S1	N/A	VLAN 1	N/A	N/A
S3	N/A	VLAN 1	N/A	N/A
PC-A	NIC	172.30.10.3	255.255.255.0	172.30.10.1
PC-B	NIC	209.165.201.2	255.255.255.0	209.165.201.1
PC-C	NIC	172.30.30.3	255.255.255.0	172.30.30.1

Objectives

Part 1: Build the Network and Configure Basic Device Settings

Part 2: Configure and Verify RIPv2 Routing

- Configure and verify RIPv2 is running on routers.
- Configure a passive interface.
- Examine routing tables.
- Disable automatic summarization.
- Configure a default route.
- Verify end-to-end connectivity.

Part 3: Configure IPv6 on Devices

Part 4: Configure and Verify RIPv6 Routing

- Configure and verify RIPv6 is running on routers.
- Examine routing tables.
- Configure a default route.
- Verify end-to-end connectivity.

Background / Scenario

RIP version 2 (RIPv2) is used for routing of IPv4 addresses in small networks. RIPv2 is a classless, distance-vector routing protocol, as defined by RFC 1723. Because RIPv2 is a classless routing protocol, subnet masks are included in the routing updates. By default, RIPv2 automatically summarizes networks at major network boundaries. When automatic summarization has been disabled, RIPv2 no longer summarizes networks to their classful address at boundary routers.

Lab – Configuring Basic RIPv2 and RIPv6

RIPv6 (RIP Next Generation) is a distance-vector routing protocol for routing IPv6 addresses, as defined by RFC 2080. RIPv6 is based on RIPv2 and has the same administrative distance and 15-hop limitation.

In this lab, you will configure the network topology with RIPv2 routing, disable automatic summarization, propagate a default route, and use CLI commands to display and verify RIP routing information. You will then configure the network topology with IPv6 addresses, configure RIPv6, propagate a default route, and use CLI commands to display and verify RIPv6 routing information.

Note: The routers used with CCNA hands-on labs are Cisco 1941 Integrated Services Routers (ISRs) with Cisco IOS Release 15.2(4)M3 (universalk9 image). The switches used are Cisco Catalyst 2960s with Cisco IOS Release 15.0(2) (lanbasek9 image). Other routers, switches, and Cisco IOS versions can be used. Depending on the model and Cisco IOS version, the commands available and output produced might vary from what is shown in the labs. Refer to the Router Interface Summary Table at the end of the lab for the correct interface identifiers.

Note: Make sure that the routers and switches have been erased and have no startup configurations. If you are unsure, contact your instructor.

Required Resources

- 3 Routers (Cisco 1941 with Cisco IOS Release 15.2(4)M3 universal image or comparable)
- 2 Switches (Cisco 2960 with Cisco IOS Release 15.0(2) lanbasek9 image or comparable)
- 3 PCs (Windows 7, Vista, or XP with terminal emulation program, such as Tera Term)
- Console cables to configure the Cisco IOS devices via the console ports
- Ethernet and Serial cables as shown in the topology

Part 1: Build the Network and Configure Basic Device Settings

In Part 1, you will set up the network topology and configure basic settings.

Step 1: Cable the network as shown in the topology.

Step 2: Initialize and reload the router and switch.

Step 3: Configure basic settings for each router and switch.

- a. Disable DNS lookup.
- b. Configure device names as shown in the topology.
- c. Configure password encryption.
- d. Assign **class** as the privileged EXEC password.
- e. Assign **cisco** as the console and vty passwords.
- f. Configure a MOTD banner to warn users that unauthorized access is prohibited.
- g. Configure **logging synchronous** for the console line.
- h. Configure the IP address listed in the Addressing Table for all interfaces.
- i. Configure a description to each interface with an IP address.
- j. Configure the clock rate if applicable to the DCE serial interface.
- k. Copy the running-configuration to the startup-configuration.

Step 4: Configure PC hosts.

Refer to the Addressing Table for PC host address information.

Step 5: Test connectivity.

At this point, the PCs are unable to ping each other.

- Each workstation should be able to ping the attached router. Verify and troubleshoot if necessary.
- The routers should be able to ping one another. Verify and troubleshoot if necessary.

Part 2: Configure and Verify RIPv2 Routing

In Part 2, you will configure RIPv2 routing on all routers in the network and then verify that routing tables are updated correctly. After RIPv2 has been verified, you will disable automatic summarization, configure a default route, and verify end-to-end connectivity.

Step 1: Configure RIPv2 routing.

- On R1, configure RIPv2 as the routing protocol and advertise the appropriate networks.

```
R1# config t
R1(config)# router rip
R1(config-router)# version 2
R1(config-router)# passive-interface g0/1
R1(config-router)# network 172.30.0.0
R1(config-router)# network 10.0.0.0
```

The **passive-interface** command stops routing updates out the specified interface. This process prevents unnecessary routing traffic on the LAN. However, the network that the specified interface belongs to is still advertised in routing updates that are sent out across other interfaces.

- Configure RIPv2 on R3 and use the **network** statement to add appropriate networks and prevent routing updates on the LAN interface.
- Configure RIPv2 on R2. Do not advertise the 209.165.201.0 network.

Note: It is not necessary to make the G0/0 interface passive on R2 because the network associated with this interface is not being advertised.

Step 2: Examine current state of network.

- The status of the two serial links can quickly be verified using the **show ip interface brief** command on R2.

```
R2# show ip interface brief
Interface                IP-Address      OK? Method Status          Protocol
Embedded-Service-Engine0/0 unassigned      YES unset  administratively down  down
GigabitEthernet0/0       209.165.201.1  YES manual  up                up
GigabitEthernet0/1       unassigned      YES unset  administratively down  down
Serial0/0/0               10.1.1.2        YES manual  up                up
Serial0/0/1               10.2.2.2        YES manual  up                up
```

- Check connectivity between PCs.

From PC-A, is it possible to ping PC-B? Why?
From PC-A, is it possible to ping PC-C? Why?

From PC-C, is it possible to ping PC-B? Why?

From PC-C, is it possible to ping PC-A? Why?

- c. Verify that RIPv2 is running on the routers.

You can use the **debug ip rip**, **show ip protocols**, and **show run** commands to confirm that RIPv2 is running. The **show ip protocols** command output for R1 is shown below.

```
R1# show ip protocols
Routing Protocol is "rip"
Outgoing update filter list for all interfaces is not set
Incoming update filter list for all interfaces is not set
Sending updates every 30 seconds, next due in 7 seconds
Invalid after 180 seconds, hold down 180, flushed after 240
Redistributing: rip
Default version control: send version 2, receive 2
  Interface          Send Recv Triggered RIP Key-chain
  Serial0/0/0        2      2
Automatic network summarization is in effect
Maximum path: 4
Routing for Networks:
  10.0.0.0
  172.30.0.0
Passive Interface(s):
  GigabitEthernet0/1
Routing Information Sources:
  Gateway            Distance      Last Update
  10.1.1.2            120
Distance: (default is 120)
```

When issuing the **debug ip rip** command on R2, what information is provided that confirms RIPv2 is running?

When you are finished observing the debugging outputs, issue the **undebug all** command at the privileged EXEC prompt.

When issuing the **show run** command on R3, what information is provided that confirms RIPv2 is running?

- d. Examine the automatic summarization of routes.

The LANs connected to R1 and R3 are composed of discontinuous networks. R2 displays two equal-cost paths to the 172.30.0.0/16 network in the routing table. R2 displays only the major classful network address of 172.30.0.0 and does not display any of the subnets for this network.

```
R2# show ip route
<Output omitted>
  10.0.0.0/8 is variably subnetted, 4 subnets, 2 masks
C       10.1.1.0/30 is directly connected, Serial0/0/0
L       10.1.1.2/32 is directly connected, Serial0/0/0
C       10.2.2.0/30 is directly connected, Serial0/0/1
```

Lab – Configuring Basic RIPv2 and RIPv3

```
L      10.2.2.2/32 is directly connected, Serial0/0/1
R      172.30.0.0/16 [120/1] via 10.2.2.1, 00:00:23, Serial0/0/1
          [120/1] via 10.1.1.1, 00:00:09, Serial0/0/0
      209.165.201.0/24 is variably subnetted, 2 subnets, 2 masks
C      209.165.201.0/24 is directly connected, GigabitEthernet0/0
L      209.165.201.1/32 is directly connected, GigabitEthernet0/0
```

R1 displays only its own subnets for the 172.30.0.0 network. R1 does not have any routes for the 172.30.0.0 subnets on R3.

R1# **show ip route**

```
<Output omitted>
      10.0.0.0/8 is variably subnetted, 3 subnets, 2 masks
C      10.1.1.0/30 is directly connected, Serial0/0/0
L      10.1.1.1/32 is directly connected, Serial0/0/0
R      10.2.2.0/30 [120/1] via 10.1.1.2, 00:00:21, Serial0/0/0
      172.30.0.0/16 is variably subnetted, 2 subnets, 2 masks
C      172.30.10.0/24 is directly connected, GigabitEthernet0/1
L      172.30.10.1/32 is directly connected, GigabitEthernet0/1
```

R3 only displays its own subnets for the 172.30.0.0 network. R3 does not have any routes for the 172.30.0.0 subnets on R1.

R3# **show ip route**

```
<Output omitted>
      10.0.0.0/8 is variably subnetted, 3 subnets, 2 masks
C      10.2.2.0/30 is directly connected, Serial0/0/1
L      10.2.2.1/32 is directly connected, Serial0/0/1
R      10.1.1.0/30 [120/1] via 10.2.2.2, 00:00:23, Serial0/0/1
      172.30.0.0/16 is variably subnetted, 2 subnets, 2 masks
C      172.30.30.0/24 is directly connected, GigabitEthernet0/1
L      172.30.30.1/32 is directly connected, GigabitEthernet0/1
```

Use the **debug ip rip** command on R2 to determine the routes received in the RIP updates from R3 and list them here.

R3 is not sending any of the 172.30.0.0 subnets, only the summarized route of 172.30.0.0/16, including the subnet mask. Therefore, the routing tables on R1 and R2 do not display the 172.30.0.0 subnets on R3.

Step 3: Disable automatic summarization.

- The **no auto-summary** command is used to turn off automatic summarization in RIPv2. Disable auto summarization on all routers. The routers will no longer summarize routes at major classful network boundaries. R1 is shown here as an example.

```
R1(config)# router rip
R1(config-router)# no auto-summary
```

- Issue the **clear ip route *** command to clear the routing table.

```
R1(config-router)# end
R1# clear ip route *
```

Lab – Configuring Basic RIPv2 and RIPv3

- c. Examine the routing tables. Remember will it take some time to converge the routing tables after clearing them.

The LAN subnets connected to R1 and R3 should now be included in all three routing tables.

```
R2# show ip route
```

```
<Output omitted>
```

```
Gateway of last resort is not set
```

```

    10.0.0.0/8 is variably subnetted, 4 subnets, 2 masks
C       10.1.1.0/30 is directly connected, Serial0/0/0
L       10.1.1.2/32 is directly connected, Serial0/0/0
C       10.2.2.0/30 is directly connected, Serial0/0/1
L       10.2.2.2/32 is directly connected, Serial0/0/1
    172.30.0.0/16 is variably subnetted, 3 subnets, 2 masks
R       172.30.0.0/16 [120/1] via 10.2.2.1, 00:01:01, Serial0/0/1
        [120/1] via 10.1.1.1, 00:01:15, Serial0/0/0
R       172.30.10.0/24 [120/1] via 10.1.1.1, 00:00:21, Serial0/0/0
R       172.30.30.0/24 [120/1] via 10.2.2.1, 00:00:04, Serial0/0/1
    209.165.201.0/24 is variably subnetted, 2 subnets, 2 masks
C       209.165.201.0/24 is directly connected, GigabitEthernet0/0
L       209.165.201.1/32 is directly connected, GigabitEthernet0/0
```

```
R1# show ip route
```

```
<Output omitted>
```

```
Gateway of last resort is not set
```

```

    10.0.0.0/8 is variably subnetted, 3 subnets, 2 masks
C       10.1.1.0/30 is directly connected, Serial0/0/0
L       10.1.1.1/32 is directly connected, Serial0/0/0
R       10.2.2.0/30 [120/1] via 10.1.1.2, 00:00:12, Serial0/0/0
    172.30.0.0/16 is variably subnetted, 3 subnets, 2 masks
C       172.30.10.0/24 is directly connected, GigabitEthernet0/1
L       172.30.10.1/32 is directly connected, GigabitEthernet0/1
R       172.30.30.0/24 [120/2] via 10.1.1.2, 00:00:12, Serial0/0/0
```

```
R3# show ip route
```

```
<Output omitted>
```

```

    10.0.0.0/8 is variably subnetted, 3 subnets, 2 masks
C       10.2.2.0/30 is directly connected, Serial0/0/1
L       10.2.2.1/32 is directly connected, Serial0/0/1
R       10.1.1.0/30 [120/1] via 10.2.2.2, 00:00:23, Serial0/0/1
    172.30.0.0/16 is variably subnetted, 2 subnets, 2 masks
C       172.30.30.0/24 is directly connected, GigabitEthernet0/1
L       172.30.30.1/32 is directly connected, GigabitEthernet0/1
R       172.30.10.0 [120/2] via 10.2.2.2, 00:00:16, Serial0/0/1
```

- d. Use the **debug ip rip** command on R2 to exam the RIP updates.

```
R2# debug ip rip
```

After 60 seconds, issue the **no debug ip rip** command.

What routes are in the RIP updates that are received from R3?

Are the subnet masks now included in the routing updates?

Step 4: Configure and redistribute a default route for Internet access.

- From R2, create a static route to network 0.0.0.0/0, using the **ip route** command. This forwards any unknown destination address traffic to the R2 G0/0 toward PC-B, simulating the Internet by setting a Gateway of Last Resort on the R2 router.

```
R2(config)# ip route 0.0.0.0 0.0.0.0 209.165.201.2
```

- R2 will advertise a route to the other routers if the **default-information originate** command is added to its RIP configuration.

```
R2(config)# router rip
```

```
R2(config-router)# default-information originate
```

Step 5: Verify the routing configuration.

- View the routing table on R1.

```
R1# show ip route
```

```
<Output omitted>
```

```
Gateway of last resort is 10.1.1.2 to network 0.0.0.0
```

```
R* 0.0.0.0/0 [120/1] via 10.1.1.2, 00:00:13, Serial0/0/0
```

```
10.0.0.0/8 is variably subnetted, 3 subnets, 2 masks
```

```
C 10.1.1.0/30 is directly connected, Serial0/0/0
```

```
L 10.1.1.1/32 is directly connected, Serial0/0/0
```

```
R 10.2.2.0/30 [120/1] via 10.1.1.2, 00:00:13, Serial0/0/0
```

```
172.30.0.0/16 is variably subnetted, 3 subnets, 2 masks
```

```
C 172.30.10.0/24 is directly connected, GigabitEthernet0/1
```

```
L 172.30.10.1/32 is directly connected, GigabitEthernet0/1
```

```
R 172.30.30.0/24 [120/2] via 10.1.1.2, 00:00:13, Serial0/0/0
```

How can you tell from the routing table that the subnetted network shared by R1 and R3 has a pathway for Internet traffic?

- View the routing table on R2.

How is the pathway for Internet traffic provided in its routing table?

Step 6: Verify connectivity.

- Simulate sending traffic to the Internet by pinging from PC-A and PC-C to 209.165.201.2.

Were the pings successful?

- Verify that hosts within the subnetted network can reach each other by pinging between PC-A and PC-C.

Were the pings successful?

Note: It may be necessary to disable the PCs firewall.

Part 3: Configure IPv6 on Devices

In Part 3, you will configure all interfaces with IPv6 addresses and verify connectivity.

Addressing Table

Device	Interface	IPv6 Address / Prefix Length	Default Gateway
R1	G0/1	2001:DB8:ACAD:A::1/64 FE80::1 link-local	N/A
	S0/0/0	2001:DB8:ACAD:12::1/64 FE80::1 link-local	N/A
R2	G0/0	2001:DB8:ACAD:B::2/64 FE80::2 link-local	N/A
	S0/0/0	2001:DB8:ACAD:12::2/64 FE80::2 link-local	N/A
	S0/0/1	2001:DB8:ACAD:23::2/64 FE80::2 link-local	N/A
R3	G0/1	2001:DB8:ACAD:C::3/64 FE80::3 link-local	N/A
	S0/0/1	2001:DB8:ACAD:23::3/64 FE80::3 link-local	N/A
PC-A	NIC	2001:DB8:ACAD:A::A/64	FE80::1
PC-B	NIC	2001:DB8:ACAD:B::B/64	FE80::2
PC-C	NIC	2001:DB8:ACAD:C::C/64	FE80::3

Step 1: Configure PC hosts.

Refer to the Addressing Table for PC host address information.

Step 2: Configure IPv6 on routers.

Note: Assigning an IPv6 address in addition to an IPv4 address on an interface is known as dual stacking. This is because both IPv4 and IPv6 protocol stacks are active.

- a. For each router interface, assign the global and link local address from the Addressing Table.
- b. Enable IPv6 routing on each router.
- c. Enter the appropriate command to verify IPv6 addresses and link status. Write the command in the space below.
- d. Each workstation should be able to ping the attached router. Verify and troubleshoot if necessary.
- e. The routers should be able to ping one another. Verify and troubleshoot if necessary.

Part 4: Configure and Verify RIPv6 Routing

In Part 4, you will configure RIPv6 routing on all routers, verify that routing tables are updated correctly, configure and distribute a default route, and verify end-to-end connectivity.

Step 1: Configure RIPv6 routing.

With IPv6, it is common to have multiple IPv6 addresses configured on an interface. The network statement has been eliminated in RIPv6. RIPv6 routing is enabled at the interface level instead, and is identified by a locally significant process name as multiple processes can be created with RIPv6.

- Issue the **ipv6 rip Test1 enable** command for each interface on R1 that is to participate in RIPv6 routing, where **Test1** is the locally significant process name.

```
R1(config)# interface g0/1
R1(config)# ipv6 rip Test1 enable
R1(config)# interface s0/0/0
R1(config)# ipv6 rip Test1 enable
```

- Configure RIPv6 for the serial interfaces on R2 with **Test2** as the process name. Do not configure for the G0/0 interface.
- Configure RIPv6 for each interface on R3 with **Test3** as the process name.
- Verify that RIPv6 is running on the routers.

The **show ipv6 protocols**, **show run**, **show ipv6 rip database**, and **show ipv6 rip process name** commands can all be used to confirm that RIPv6 is running. On R1, issue the **show ipv6 protocols** command.

```
R1# show ipv6 protocols
IPv6 Routing Protocol is "connected"
IPv6 Routing Protocol is "ND"
IPv6 Routing Protocol is "rip Test1"
  Interfaces:
    Serial0/0/0
    GigabitEthernet0/1
  Redistribution:
    None
```

How is the RIPv6 listed in the output?

- Issue the **show ipv6 rip Test1** command.

```
R1# show ipv6 rip Test1
RIP process "Test1", port 521, multicast-group FF02::9, pid 314
  Administrative distance is 120. Maximum paths is 16
  Updates every 30 seconds, expire after 180
  Holddown lasts 0 seconds, garbage collect after 120
  Split horizon is on; poison reverse is off
  Default routes are not generated
  Periodic updates 1, trigger updates 0
  Full Advertisement 0, Delayed Events 0
  Interfaces:
    GigabitEthernet0/1
    Serial0/0/0
  Redistribution:
```

None

How are RIPv2 and RIPv6 similar?

- f. Inspect the IPv6 routing table on each router. Write the appropriate command used to view the routing table in the space below.

On R1, how many routes have been learned by RIPv6?

On R2, how many routes have been learned by RIPv6?

On R3, how many routes have been learned by RIPv6?

- g. Check connectivity between PCs.

From PC-A, is it possible to ping PC-B?

From PC-A, is it possible to ping PC-C?

From PC-C, is it possible to ping PC-B?

From PC-C, is it possible to ping PC-A?

Why are some pings successful and others not?

Step 2: Configure and redistribute a default route.

- a. From R2, create a static default route to network ::0/64 using the **ipv6 route** command, and the IP address of exit interface G0/0. This forwards any unknown destination address traffic to the R2 G0/0 interface toward PC-Bs, simulating the Internet. Write the command used in the space below.
- b. Static routes can be included in RIPv6 updates by using the **ipv6 rip process name default-information originate** command in interface configuration mode. Configure the serial links on R2 to send the default route in RIPv6 updates.

```
R2(config)# int s0/0/0
R2(config-rtr)# ipv6 rip Test2 default-information originate
R2(config)# int s0/0/1
R2(config-rtr)# ipv6 rip Test2 default-information originate
```

Step 3: Verify the routing configuration.

- a. View the IPv6 routing table on R2.

```
R2# show ipv6 route
IPv6 Routing Table - 10 entries
Codes: C - Connected, L - Local, S - Static, R - RIP, B - BGP
       U - Per-user Static route, M - MIPv6
       I1 - ISIS L1, I2 - ISIS L2, IA - ISIS interarea, IS - ISIS summary
       O - OSPF intra, OI - OSPF inter, OE1 - OSPF ext 1, OE2 - OSPF ext 2
       ON1 - OSPF NSSA ext 1, ON2 - OSPF NSSA ext 2
       D - EIGRP, EX - EIGRP external
S    ::/64 [1/0]
```

Lab – Configuring Basic RIPv2 and RIPv6

```
    via 2001:DB8:ACAD:B::B
R   2001:DB8:ACAD:A::/64 [120/2]
    via FE80::1, Serial0/0/0
C   2001:DB8:ACAD:B::/64 [0/0]
    via ::, GigabitEthernet0/1
L   2001:DB8:ACAD:B::2/128 [0/0]
    via ::, GigabitEthernet0/1
R   2001:DB8:ACAD:C::/64 [120/2]
    via FE80::3, Serial0/0/1
C   2001:DB8:ACAD:12::/64 [0/0]
    via ::, Serial0/0/0
L   2001:DB8:ACAD:12::2/128 [0/0]
    via ::, Serial0/0/0
C   2001:DB8:ACAD:23::/64 [0/0]
    via ::, Serial0/0/1
L   2001:DB8:ACAD:23::2/128 [0/0]
    via ::, Serial0/0/1
L   FF00::/8 [0/0]
    via ::, Null0
```

How can you tell from the routing table that R2 has a pathway for Internet traffic?

- b. View the routing tables on R1 and R3.

How is the pathway for Internet traffic provided in their routing tables?

Step 4: Verify connectivity.

Simulate sending traffic to the Internet by pinging from PC-A and PC-C to 2001:DB8:ACAD:B::B/64.

Were the pings successful?

Reflection

1. Why would you turn off automatic summarization for RIPv2?
2. In both scenarios, how did R1 and R3 learn the pathway to the Internet?
3. How are configuring RIPv2 and RIPv6 different?

Router Interface Summary Table

Router Interface Summary				
Router Model	Ethernet Interface #1	Ethernet Interface #2	Serial Interface #1	Serial Interface #2
1800	Fast Ethernet 0/0 (F0/0)	Fast Ethernet 0/1 (F0/1)	Serial 0/0/0 (S0/0/0)	Serial 0/0/1 (S0/0/1)
1900	Gigabit Ethernet 0/0 (G0/0)	Gigabit Ethernet 0/1 (G0/1)	Serial 0/0/0 (S0/0/0)	Serial 0/0/1 (S0/0/1)
2801	Fast Ethernet 0/0 (F0/0)	Fast Ethernet 0/1 (F0/1)	Serial 0/1/0 (S0/1/0)	Serial 0/1/1 (S0/1/1)
2811	Fast Ethernet 0/0 (F0/0)	Fast Ethernet 0/1 (F0/1)	Serial 0/0/0 (S0/0/0)	Serial 0/0/1 (S0/0/1)
2900	Gigabit Ethernet 0/0 (G0/0)	Gigabit Ethernet 0/1 (G0/1)	Serial 0/0/0 (S0/0/0)	Serial 0/0/1 (S0/0/1)

Note: To find out how the router is configured, look at the interfaces to identify the type of router and how many interfaces the router has. There is no way to effectively list all the combinations of configurations for each router class. This table includes identifiers for the possible combinations of Ethernet and Serial interfaces in the device. The table does not include any other type of interface, even though a specific router may contain one. An example of this might be an ISDN BRI interface. The string in parenthesis is the legal abbreviation that can be used in Cisco IOS commands to represent the interface.