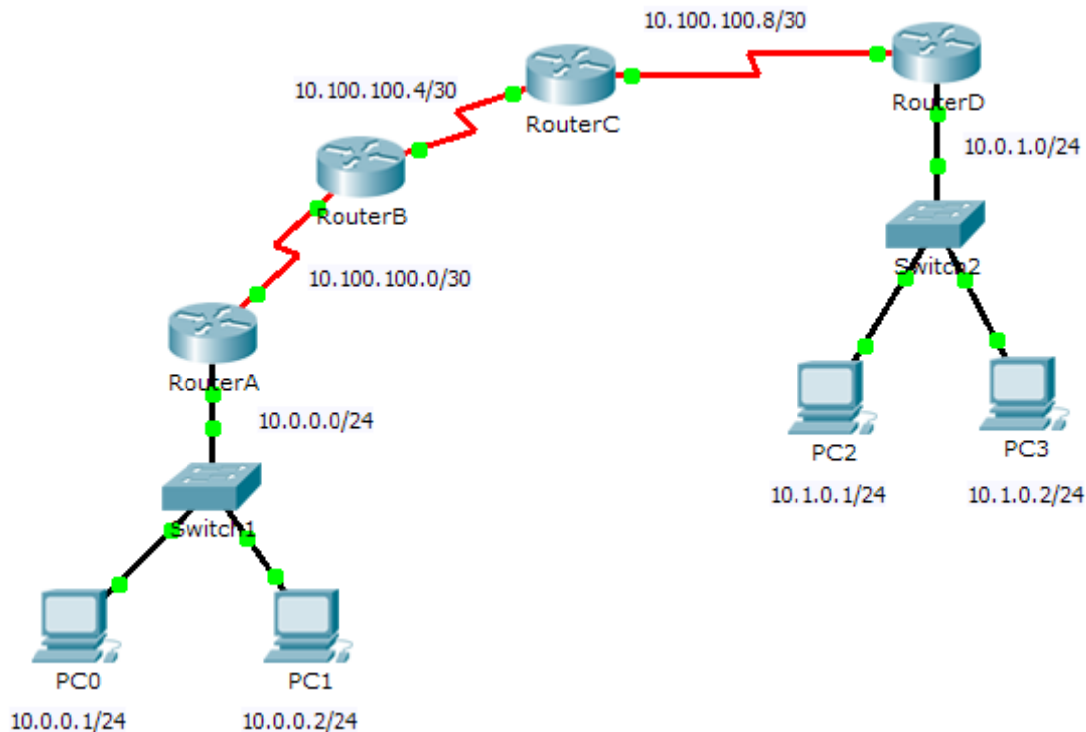


# Packet Tracer - Testing Connectivity with Traceroute

## Topology



## Objectives

**Part 1: Test End-to-End Connectivity with the tracert Command**

**Part 2: Compare to the traceroute Command on a Router**

## Background

This activity is designed to help you troubleshoot network connectivity issues using commands to trace the route from source to destination. You are required to examine the output of **tracert** (the Windows command) and **traceroute** (the IOS command) as packets traverse the network and determine the cause of a network issue. After the issue is corrected, use the **tracert** and **traceroute** commands to verify the completion.

## Part 1: Test End-to-End Connectivity with the tracert Command

**Step 1: Send a ping from one end of the network to the other end.**

Click **PC1** and open the **Command Prompt**. Ping **PC3** at **10.1.0.2**. What message is displayed as a result of the ping?

**Step 2: Trace the route from PC1 to determine where in the path connectivity fails.**

- From the **Command Prompt** of **PC1**, enter the **tracert 10.1.0.2** command.
- When you receive the **Request timed out** message, press **Ctrl+C**. What was the first IP address listed in the **tracert** output?

- c. Observe the results of the **tracert** command. What is the last address reached with the **tracert** command?

### Step 3: Correct the network problem.

- a. Compare the last address reached with the **tracert** command with the network addresses listed on the topology. The furthest device from the host 10.0.0.2 with an address in the network range found is the point of failure. What devices have addresses configured for the network where the failure occurred?
- b. Click **RouterC** and then the **CLI** tab.
- c. What is the status of the interfaces?
- d. Compare the IP addresses on the interfaces with the network addresses on the topology. Does there appear to be anything extraordinary?
- e. Make the necessary changes to restore connectivity; however, do not change the subnets. What is solution?

### Step 4: Verify that end-to-end connectivity is established.

- a. From the **PC1 Command Prompt**, enter the **tracert 10.1.0.2** command.
- b. Observe the output from the **tracert** command. Was the command successful?

## Part 2: Compare to the traceroute Command on a Router

- a. Click **RouterA** and then the **CLI** tab.
- b. Enter the **traceroute 10.1.0.2** command. Did the command complete successfully?
- c. Compare the output from the router **traceroute** command with the PC **tracert** command. What is noticeably different about the list of addresses returned?

## Suggested Scoring Rubric

Activity Section	Question Location	Possible Points	Earned Points
Part 1: Test End-to-End Connectivity with the <b>tracert</b> Command	Step 1	10	
	Step 2b	10	
	Step 2c	10	
	Step 3a	10	
	Step 3c	10	
	Step 3d	10	
	Step 3e	10	
	Step 4b	10	
<b>Part 1 Total</b>		<b>80</b>	
Part 2: Compare to the <b>tracert</b> Command on a Router	a	10	
	b	10	
<b>Part 2 Total</b>		<b>20</b>	
<b>Total Score</b>		<b>100</b>	