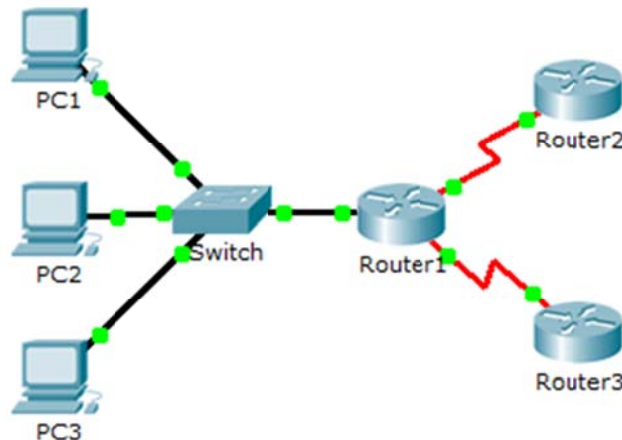


# Packet Tracer - Investigate Unicast, Broadcast, and Multicast Traffic

## Topology



## Objectives

**Part 1: Generate Unicast Traffic**

**Part 2: Generate Broadcast Traffic**

**Part 3: Investigate Multicast Traffic**

## Background/Scenario

This activity will examine unicast, broadcast, and multicast behavior. Most traffic in a network is unicast. When a PC sends an ICMP echo request to a remote router, the source address in the IP packet header is the IP address of the sending PC. The destination address in the IP packet header is the IP address of the interface on the remote router. The packet is sent only to the intended destination.

Using the **ping** command or the Add Complex PDU feature of Packet Tracer, you can directly ping broadcast addresses to view broadcast traffic.

For multicast traffic, you will view EIGRP traffic. EIGRP is used by Cisco routers to exchange routing information between routers. Routers using EIGRP send packets to multicast address 224.0.0.10, which represents the group of EIGRP routers. Although these packets are received by other devices, they are dropped at Layer 3 by all devices except EIGRP routers, with no other processing required.

## Part 1: Generate Unicast Traffic

### Step 1: Use ping to generate traffic.

- a. Click **PC1** and click the **Desktop** tab > **Command Prompt**.
- b. Enter the **ping 10.0.3.2** command. The ping should succeed.

### Step 2: Enter Simulation mode.

- a. Click the **Simulation** tab to enter Simulation mode.
- b. Click **Edit Filters** and verify that only ICMP and EIGRP events are selected.

- c. Click **PC1** and enter the **ping 10.0.3.2** command.

### Step 3: Examine unicast traffic.

The PDU at **PC1** is an ICMP echo request intended for the serial interface on **Router3**.

- a. Click **Capture/Forward** repeatedly and watch while the echo request is sent to **Router3** and the echo reply is sent back to **PC1**. Stop when the first echo reply reaches PC1.

Which devices did the packet travel through with the unicast transmission?

- b. In the Simulation Panel Event List section, the last column contains a colored box that provides access to detailed information about an event. Click the colored box in the last column for the first event. The PDU Information window opens.

What layer does this transmission start at and why?

- c. Examine the Layer 3 information for all of the events. Notice that both the source and destination IP addresses are unicast addresses that refer to PC1 and the serial interface on Router3.

What two changes take place at Layer 3 when the packet arrives at Router3?

- d. Click **Reset Simulation**.

## Part 2: Generate Broadcast Traffic

### Step 1: Add a complex PDU.

- a. Click **Add Complex PDU**. The icon for this is in the right toolbar and shows an open envelope.
- b. Float the mouse cursor over the topology and the pointer changes to an envelope with a plus (+) sign.
- c. Click **PC1** to serve as the source for this test message and the **Create Complex PDU** dialog window opens. Enter the following values:

- Destination IP Address: **255.255.255.255** (broadcast address)
- Sequence Number: 1
- One Shot Time: 0

Within the PDU settings, the default for **Select Application**: is PING. What are at least 3 other applications available for use?

- d. Click **Create PDU**. This test broadcast packet now appears in the **Simulation Panel Event List**. It also appears in the PDU List window. It is the first PDU for Scenario 0.
- e. Click **Capture/Forward** twice. This packet is sent to the switch and then broadcasted to **PC2**, **PC3**, and **Router1**. Examine the Layer 3 information for all of the events. Notice that the destination IP address is 255.255.255.255, which is the IP broadcast address you configured when you created the complex PDU.

Analyzing the OSI Model information, what changes occur in the Layer 3 information of the Out Layers column at Router1, PC2, and PC3?

- f. Click **Capture/Forward** again. Does the broadcast PDU ever forward on to Router2 or Router3? Why?
- g. After you are done examining the broadcast behavior, delete the test packet by clicking **Delete** below **Scenario 0**.

### Part 3: Investigate Multicast Traffic

#### Step 1: Examine the traffic generated by routing protocols.

- a. Click **Capture/Forward**. EIGRP packets are at Router1 waiting to be multicast out of each interface.
- b. Examine the contents of these packets by opening the PDU Information window and click **Capture/Forward** again. The packets are sent to the two other routers and the switch. The routers accept and process the packets, because they are part of the multicast group. The switch will forward the packets to the PCs.
- c. Click **Capture/Forward** until you see the EIGRP packet arrive at the PCs.

What do the hosts do with the packets?

Examine the Layer 3 and Layer 4 information for all of the EIGRP events.

What is the destination address of each of the packets?

- d. Click one of the packets delivered to one of the PCs. What happens to those packets?

Based on the traffic generated by the three types of IP packets, what are the major differences in delivery?

## Suggested Scoring Rubric

Activity Section	Question Location	Possible Points	Earned Points
Part 1: Unicast Traffic	Step 3a	10	
	Step 3b	10	
	Step 3c	10	
<b>Part 1 Total</b>		<b>30</b>	
Part 2: Broadcast traffic	Step 1c	10	
	Step 1e	10	
	Step 1f	10	
<b>Part 2 Total</b>		<b>30</b>	
Part 3: Multicast traffic	Step 1c,q1	10	
	Step 1c, q2	10	
	Step 1d, q1	10	
	Step 1d, q2	10	
<b>Part 3 Total</b>		<b>40</b>	
<b>Total Score</b>		<b>100</b>	